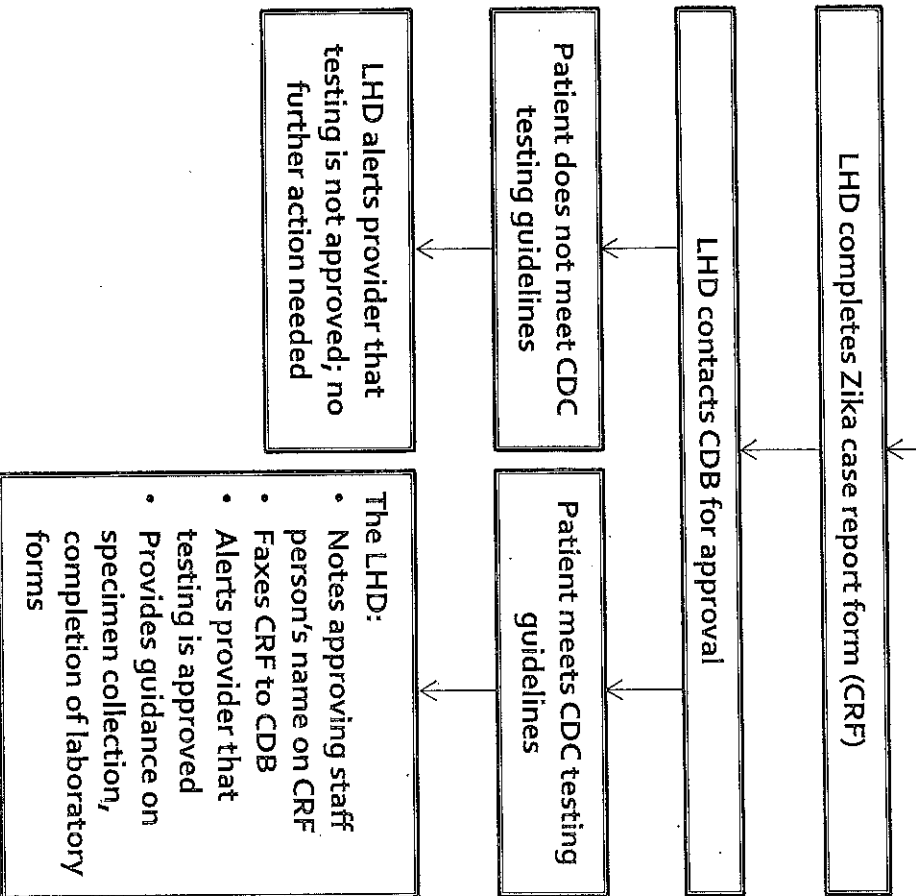
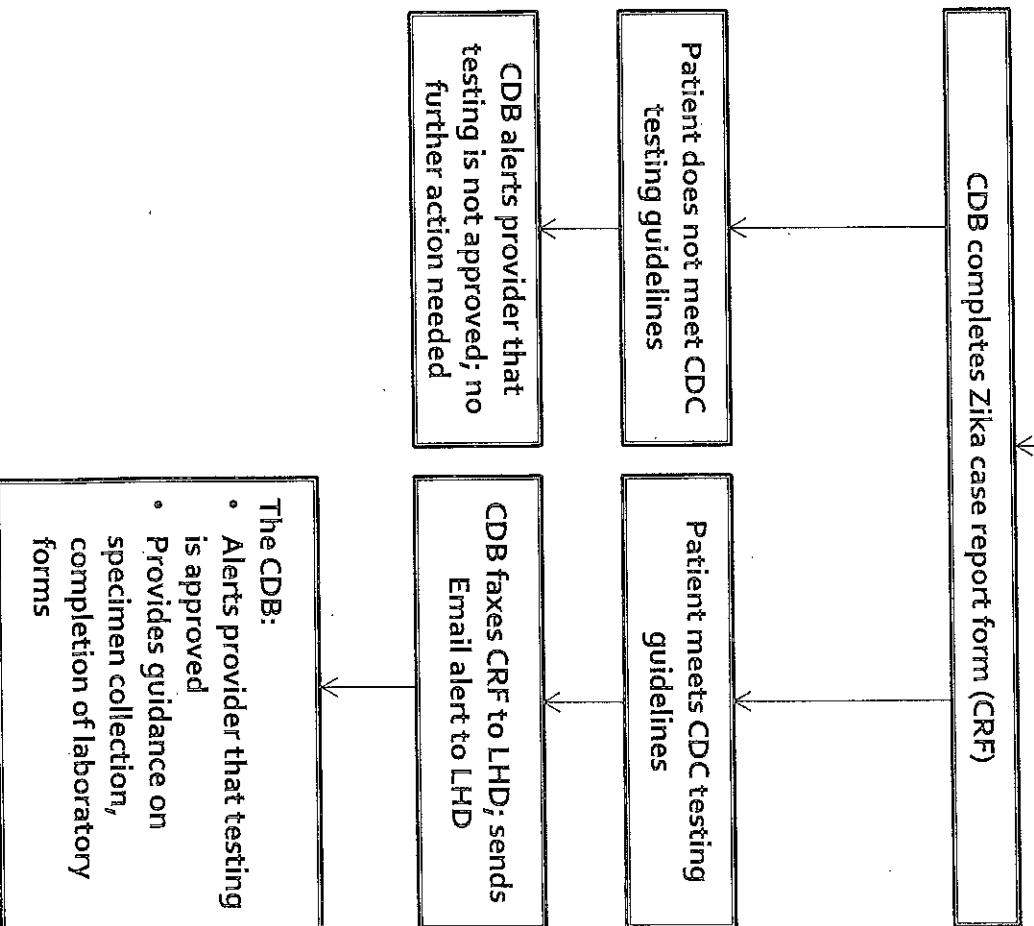


Zika Testing Approval Process

If a provider contacts their local health department (LHD)



If a provider contacts the Communicable Disease Branch (CDB)



Zika Test Result Notification Process

The NC State Laboratory of Public Health (SLPH) receives a Zika test result from CDC

SLPH immediately fax POSITIVE results to CDB and all submitters listed on the DASH form

CDB confirms the result and patient identification

- CDB notifies the LHD of the result:
- If it is the county's first positive result, CDB will call the health director
 - If the health director is unavailable and for all subsequent positive results, CDB will call the CD nurse
 - CDB will fax the lab result to the LHD
 - The county decides if CDB or the county will contact the provider

CDB reports the positive result to CDC via ArboNET

SLPH faxes NEGATIVE results in a timely manner to CDB and all submitters listed on the DASH form

CDB confirms the result and patient identification

- CDB notifies the LHD of the result:
- CDB contacts the CD nurse
 - CDB will fax the lab result to the LHD

DPH Program Monitoring Schedule April – October 2016 Table 11

April	May	June	Monitoring Date(s)	DPH Program Consultants
Duplin			April 4 and 5 WH Policy Review April 7 and 8 Audit	WH, CH, LTAT, PHN&PD (Susan and Sandy)
	Sampson		May 18 and 20	WH, CH, LTAT, PHN&PD (Pamela, Ann, Sandy)
	Davidson		May 25 and 26	WH, CH, LTAT, PHN&PD (Pamela, Kathy)
		Transylvania	Pending	WH, CH, LTAT, PHN&PD (Rhonda, Dianne)
		Madison	Pending	WH, CH, LTAT, PHN&PD (Rhonda, Dianne)
	Willkes		May 11 and 12	WH, CH, LTAT, PHN&PD (Lynn, Kathy)
		Stokes	June 1 and 2	WH, CH, LTAT, PHN&PD (Lynn, Kathy)
		Macon	June 8 and 9	WH, CH, LTAT, PHN&PD (Rhonda, Dianne)
		Appalachian District	Pending	WH, LTAT, PHN&PD (Lynn, Dianne)
August	September	October	Monitoring Date(s)	DPH Program Consultants
Hoke				WH, CH, LTAT, PHN&PD (Pamela, Sandy, Debby, Patty)
Lenoir				WH, CH, LTAT, PHN&PD (Betty, Sandy, Pamela, Debby)
Yadkin				WH, CH, LTAT, PHN&PD (Kathy, Lynn, Dara, Debby)
	AR			WH, LTAT, PHN&PD (Susan, Ann, Dara)
		Pamlico		WH, CH, LTAT, PHN&PD (Ann, Pamela, Betty, Debby)
	Graham			WH, CH, LTAT, PHN&PD (Rhonda, Dianne, Patty, Debby)
		Hertford		WH, CH, LTAT, PHN&PD (Susan, Kathy, Debby, Dara)
		Burke		WH, CH, LTAT, PHN&PD (Rhonda, Dianne, Debby, Betty)

Indicates WH, CH, LTAT and PHN&PD will be involved in the pilot

Indicates WH and LTAT will be involved in the pilot